



ATTACHMENT #2

MEMORANDUM

TO: Patty Wahto, JNU Airport Manager

FROM: Catherine Fritz, AIA, JNU Airport Architect

RE: Architect's Report of January 2018 Activity

DATE: February 6, 2018

The Snow Removal Equipment Building (SREB) achieved Substantial Completion on January 31, 2018! The long awaited building will be a tremendous asset to snow removal operations. JNU airfield crew is moving equipment into the facility while the punch list items are completed by the Contractor. A change order for constructing the Wash Bay has been negotiated at a cost of \$2,058,922. This work will begin in April 2018 and is scheduled for completion by the end of the summer. Additional project components will continue through the next several months as I work with the Federal Aviation Administration (FAA) to determine grant eligibility.

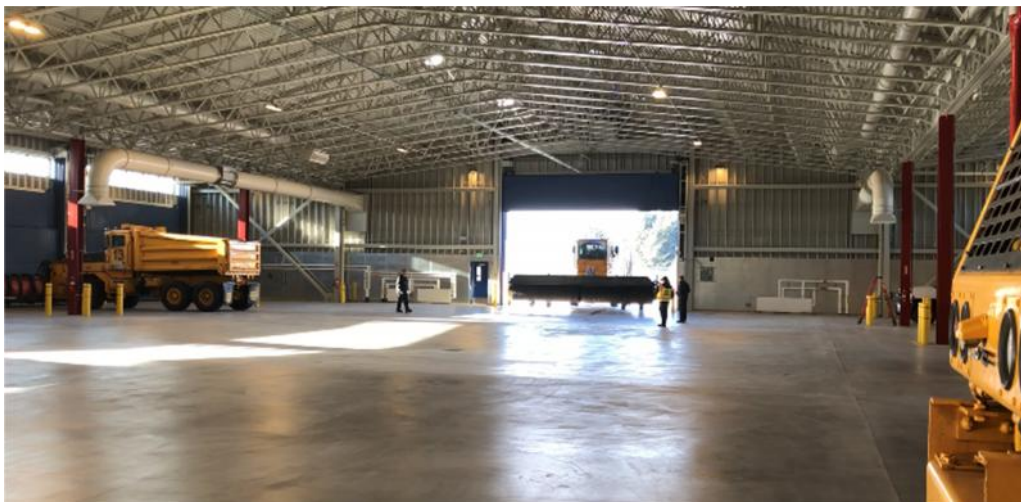
The revised equipment for the Radio Coverage Improvements Project is currently being fabricated. The Contractor, Juneau Electric, is working with JNU staff to identify antenna locations.

Five proposals were received from design teams interested in working on the next phase of terminal reconstruction. The team that was selected by the Evaluation Committee as being the most qualified is led by MCG Architects from Anchorage, and includes civil, electrical, mechanical, and construction inspection subconsultants from Juneau. Scope and fee negotiations began on January 31, 2018. Once the contract is in place, a planning work session will be scheduled. Preliminary land survey work in the vicinity of proposed lease lots is also underway.

JNU Airport was named as a partner with the SE Alaska Watershed Coalition in a grant application to restore habitat and improve safety in the Jordan Creek greenbelt along the north boundary of the airport. The grant was submitted on January 31, 2018; the airport's role will be to provide in-kind services, such as labor and equipment.

Terminal maintenance projects during January included:

- Completion of Gate 6 flooring repairs.
- Made minor repairs to north vestibule doors; planning replacement with salvaged doors from east wall door removal project if the repairs do not hold up.
- Removed derelict equipment from old kitchen.
- Miscellaneous interior painting in the terminal.



Equipment moving into SREB at west end.