

ATTACHMENT #2



MEMORANDUM

TO: Patty Wahto,
JNU Airport Manager

DATE: June 7, 2017

FROM: Catherine Fritz, AIA
JNU Airport Architect

RE: Architect's Report of May 2017 Activity

The Aircraft Rescue and Fire Fighting (ARFF) Station modifications project reached 91% complete at the end of May. Work during this period included completion of electrical and mechanical systems (except vehicle exhaust system), interior finishes, and essential work to meet Substantial Completion by June 8, 2017 (this is an extension to the original SC date of June 1, primarily due to complications associated with the electrical wiring for door controls).

The ARFF Building's specified vehicle exhaust system included the wrong type of connections for the specific ARFF fleet. The mechanical engineer corrected the specification and the Contractor is working with the supplier to return the incorrect unit and expedite shipment of the correct ones. Final testing and balancing of mechanical systems will be done when the vehicle exhaust units are installed. The ARFF trucks are being parked outside of the new apparatus bays until the vehicle exhaust work can be completed.

May's construction activities on the Snow Removal Equipment Building (SREB) focused on structural steel framing and decking, and backfilling around concrete foundations. Underground piping began, water line installation was completed, and electrical utility service was completed. A conflict of the new storm drain line and the existing sewer main was discovered in mid-May. The lack of as-built drawings of the force main sewer that extends through the SREB site has caused significant challenges that are being addressed with the CBJ Wastewater utility, SREB design engineers, and the Contractor. FAA has been notified of the problem, which will require a change order to resolve.

The SREB design team met with JNU staff on May 10, 2017 to finalize the scope for Phase 1B of the project. This scope will include the Equipment Wash Bay, Grease & Lube Bay, and limited mechanic support spaces. The construction documents are scheduled to be complete by October 2017.

A design workshop on the Gate 2 Passenger Boarding Bridge (PBB) project was held with the consulting team and airport staff on May 25-26, 2017. The preferred PBB option is a 3-section telescoping radial bridge design that will connect through the northwest corner of the existing second floor Departure Lounge. The Design Report is currently being drafted and fee negotiations are underway for developing construction bid documents.

A pre-construction conference for the Electrical Panels Upgrade project was held on May 24, 2017 with the Contractor, Alaska Electric, representatives from Alaska Airlines and Delta Air Lines, and JNU staff. Materials were ordered, and the work will begin as soon as they arrive.

Bid documents for the Radio Coverage Improvements Project were finalized during May and forwarded to the CBJ Engineering Contracts office for bidding on June 2, 2017.

The lettering for the main entry sign, JUNEAU INTERNATIONAL AIRPORT, was ordered in May, and a construction contract with Dawson Construction was initiated. Dawson's contract will also include modifications to the east exterior wall near Baggage Claim. The total contract amount for both components is less than \$50,000.

ATTACHMENT #2

Terminal Maintenance projects during May included:

- Construction continued for a new Break Room for TSA employees in the former restaurant serving area on the second floor.
- SRI, Inc. completed repairs to siding that have stopped the leaks.



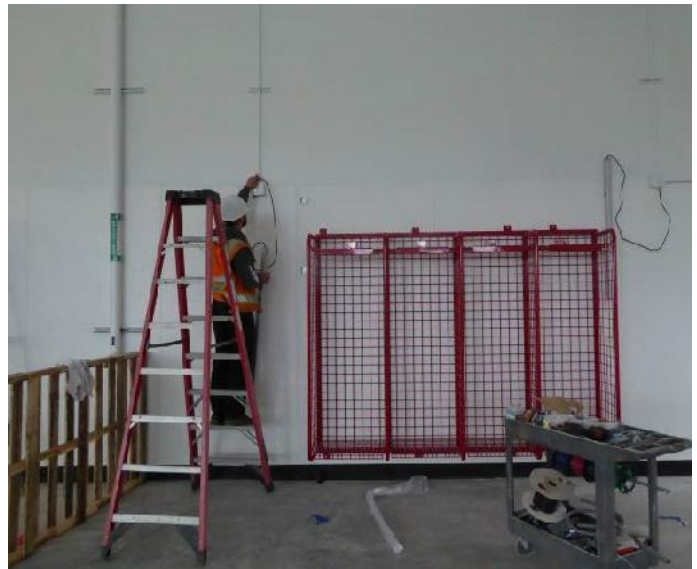
SREB Interior view, looking east through the equipment parking area.



View of SREB steel frame looking West. Maintenance Bay in foreground.



ARFF Apparatus Bays interior view, as finishes are being installed.



Electrician installs back up lights near lockers in ARFF Apparatus Bay.